

## EMS Spare Parts Catalog

2023/2024

Air-Lec is the exclusive distributor for EMS Doors and Parts in the USA. Please contact us at [info@air-lec.com](mailto:info@air-lec.com) or call us at 608-244-4754 for any questions or quotes required.

[www.air-lec.com/ems-doors](http://www.air-lec.com/ems-doors)



## ems - Insulated Doors

### The perfect solution for high demands in insulation, functionality and durability.

Every company in which efficient insulation plays an essential role in ensuring a smooth production sequence is aware of the importance of the right insulated doors. In addition to thermal features required, the door must also provide excellent functionality and long service life, must be user-friendly and ensure operational safety, and be of use in both the Food and Non-Food sector.

We are aware of these high demands which motivate us to continuous improvement. Since 1970 the engineers of the ems engineering have developed isolated doors for freezer, cold, service and clean rooms. Our customers' demands have grown continuously, and our services have improved accordingly.

Inventiveness, willingness to innovate and flexibility have made the company what it is today: one of the leading manufacturers of insulation doors on the European market. All current standard formats are produced at our plant in Pansdorf (Ostholstein), which are applied worldwide, as well as special constructions for special building projects.

Experience and know-how gained from special constructional designs flow directly into the work of our Development Department, ensuring that ems insulated doors can always meet current demands of the market.

**ems hinged doors** are available in single-leaf and double-winged design in door leaf thicknesses of 40 mm to 120 mm. If required, we can also supply fast-freezing room doors with 160 mm door leaf thickness. The hinged doors are used in cold rooms, stores and cells up to 0 °C (type KTM). Freezer room hinged doors (GTM) can be used in freezing rooms, stores up to -28 °C, are optional available for fast-freezing rooms up to -40°C. Service room doors (type BTM) are used in service rooms and internal logistics.

**ems sliding doors** are available in single-leaf and double-winged design in door leaf thicknesses of 80 mm to 140 mm. If required, we can also supply fast-freezing room sliding doors with 200 mm door leaf thickness. The sliding doors are used in cold rooms, stores and cells up to 0°C (type KSL / KS). Freezer room sliding doors (Type GSL / GS) can be used in freezing rooms, stores and cells up to -28°C, and are optionally available for fast-freeze rooms up to -40°C. Service room sliding doors (Type BS) are used in service rooms and internal logistics.

## Spare parts catalog 2023 / 2024

ems Hinged Door Standard Locks	3-4
ems Hinged Door Adapter Plates	5-6
ems Hinged Door Special Locks	7-8
ems Hinged Door Sets/Locks	9-10
ems Hinged Door Hinges	11-12
ems Repair Plates/Reinforcement	13-14
ems Sealing Profiles	15-16
ems Heating Cover/Heating	17-18
ems Sliding Door Lock Lever 2013	19-20
ems Sliding Door Lock Lever 2000	21-22
ems Sliding Door Suspension Manual/Auto	23-24
ems Sliding Door Bottom Guide/Swing Door	25-26
ems Sliding Door Automatic Accessories	27-28

**Door handle with key lock KTM80mm  
// GTM 120-160mm****KTM Door handle complete DIN Left / Right**  
4000001827**GTM Door handle complete DIN Left / Right**  
4000001812**GTM Door handle complete DIN Left / Right**  
4000001818 (TS 160mm)**Locking wedge GTM**  
4000002523**Locking wedge KTM**  
4000002522**Reverse closure DT KTM TS 80mm //  
GTM 120-160mm****Reverse closure DIN Right** 4000001796**Reverse closure DIN Left** 4000001792**Locking wedge reverse closure**

DIN Right 4000002515

DIN Left 4000002514

**Multipoint locking KTM TS 80mm  
// GTM TS 120-160mm****KTM Multipoint locking**  
DIN Right 4000001830**KTM Multipoint locking**  
DIN Left 4000001831**GTM Multipoint locking**  
DIN Right 4000001817**GTM Multipoint locking**  
DIN Left 4000001819**Single closer green**

DIN Left 4000002518

DIN Right 4000002519

**Single closer steel**

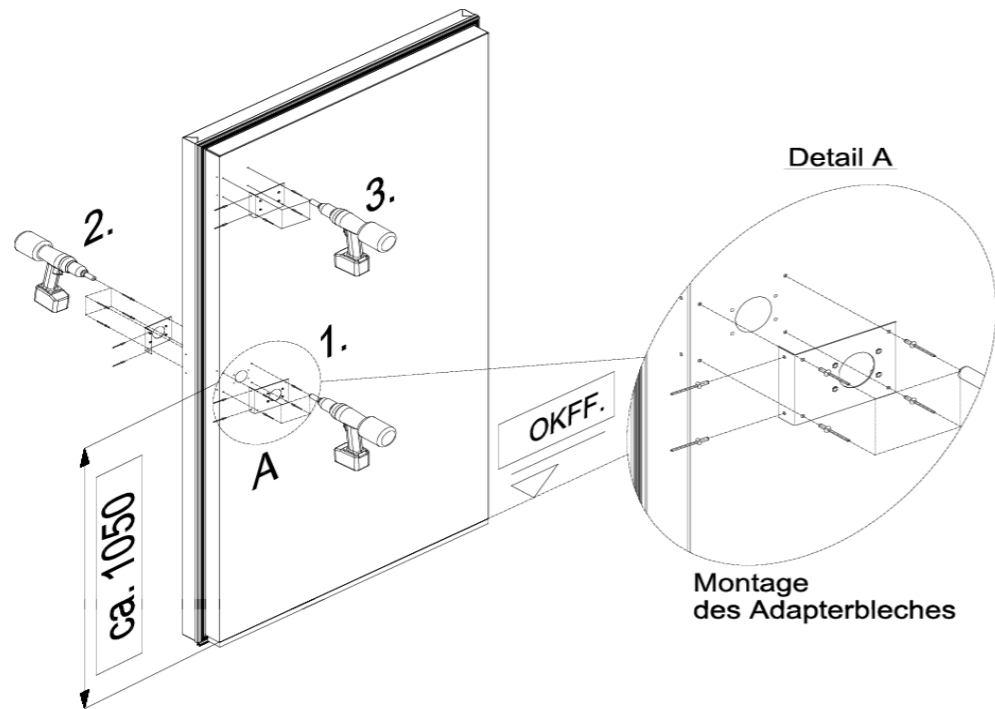
DIN Left 4000002520

DIN Right 4000002521



Adapter plates for the EMS-Press-2012 locking mechanism

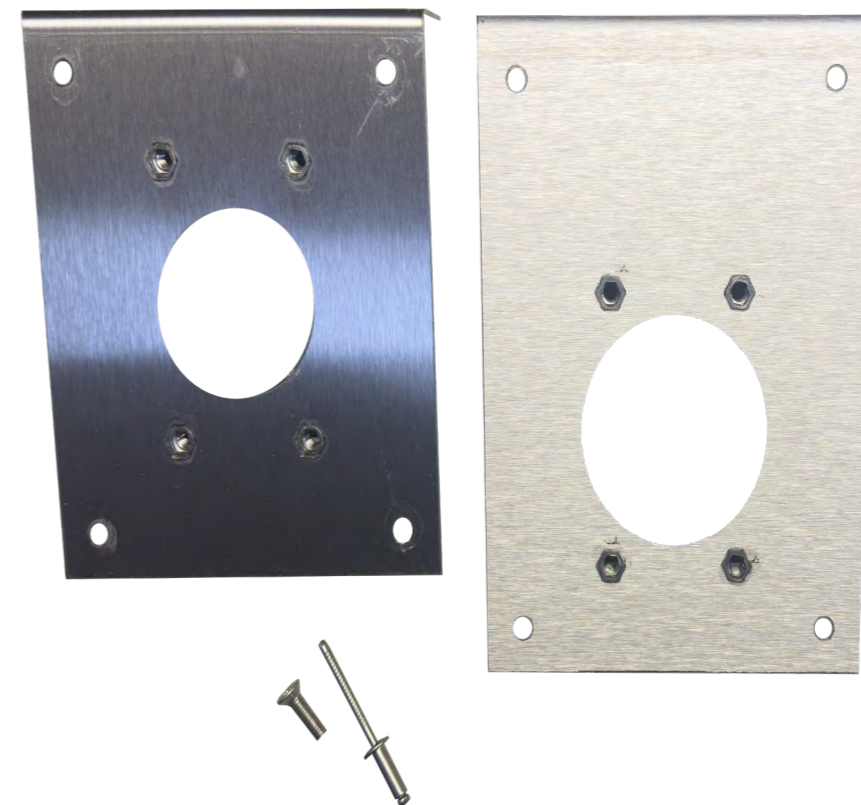
Assembly recommendation



- Disassemble the old swing door latch
- Fill the holes of the old swing door latch with construction or assembly foam
- On the inside of the door, mark the hole pattern of the new closure using the enclosed paper template (at a height of approx. 1.05 m measured from the OKFF to the center of the larger hole)
- Pre-drill door leaf (drilling depth approx. 20-25mm) and rivet with adapter plate (1)
- Apply sealing (e.g., primer + cold-resistant silicone) all around the adapter plate
- The installation of the adapter plate on the outside of the door is done in the same way as the installation on the inside of the door (2)
- If necessary, the installation of the adapter plate for the multi-point locking system is carried out in the same way as the installation on the inside of the door (3)
- Please follow the installation instructions provided in the accompanying installation manual to mount the door latch

Adapter plates for the EMS-Press-2012

4000002570



Adapter plates are required for older lever versions!

	<b>NOTE</b>
	<p>Immediately after completion of the installation work, all protective installation films must be removed.</p>

**ems Compact lock**

Compact inner lever

4000001273



Compact lock

4000001274



Compact locking wedge

400002782

**ems Espagnolette lock**

Espagnolette lock 4000001295

Espagnolette bar 4000001145

Important to determine the length of  
the shoot bolt we need the clear height  
of the door!

**ems „lock with worm gear“**

Handle set Polished

4000001851

**„lock with worm gear“**

DIN Left 4000001863

DIN Right 4000001862

**Short shield gray**

4000001789

**Polished long shield**

4000001754

**ems Overhead door closer**

OTS TS-61 hinge side silver 4000001837

OTS TS-61 hinge side white 4000001838

OTS TS -61G silver 4000001907

OTS TS-61G white 4000001839



### Mortise lock PZ solid nut 8mm Backset 55mm

DIN Left 4000001857

DIN Right 4000001856



### Panic lock shared Nut 9mm Backset 65mm

DIN Left 4000001848

DIN Right 4000001847



### Panic lock (Knob fixed PZ fixed Nut 9mm Backset 55mm

DIN Left 4000001843

DIN Right 4000001842



### Panic lock shared Nut 9mm Back- set 55mm

DIN Left 4000001873

DIN Right 4000001874



### Stainless steel VDS set with 125mm square pin

4000001854



### Stainless steel VDS set with 125mm square pin

4000001871



### Profile cylinder BT 40 27/32mm

4000001959



### Profile cylinder BTM 30/70mm

4000001965



Special locks, sets and profile cylinders on request!

**Stainless steel hinges****Hinge top KTM TS 80mm**

Left 4000001923 / Right 4000001927

**Hinge below KTM TS 80mm**

Left 4000001925 / Right 4000001929

**Hinge top GTM TS 120mm**

Left 4000001922 / Right 4000001926

**Hinge below GTM TS 120mm**

Left 40000001924 / Right 4000001928

**Stainless steel hinges  
execution heavy****Hinge execution heavy top GTM**

Left 4000001758 / Right 4000001760

**Hinge execution heavy below GTM**

Left 4000001759 / Right 4000001761

**Edge hinges**

Edge hinges 2-piece DIN Left 4000002095

Edge hinges 2-piece DIN Right 4000002004

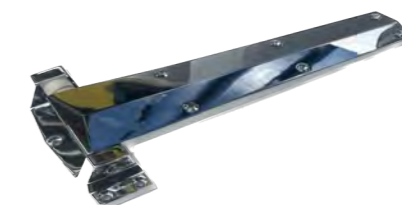
Edge hinges 2-piece DIN Left 4000001769

Edge hinges 2-piece DIN Right 4000001772

**ems Hatch hinge  
4000001762****BT 40 Hinge  
4000002003****Old Hinges**

DIN Left 4000001768

Din Right 4000001767





## Repair Plates / Reinforcement Stainless Steel Hinge

### KTM TS 80mm // GTM TS 120mm Frame top

KTM 1 Hinge 4000002643

GTM 1 Hinge 4000002643

KTM 2 Hinge 4000002644

GTM 2 Hinge 4000002644

### KTM TS 80mm // GTM TS 120mm Doorleaf top

KTM 1 Hinge 4000002637

GTM 1 Hinge 4000002640

KTM 2 Hinge 4000002638

GTM 2 Hinge 4000002641

### KTM TS 80mm // GTM TS 120mm Frame below

KTM 1 Hinge 4000002645

GTM 1 Hinge 4000002645

### KTM TS 80mm // GTM TS 120mm Doorleaf below

KTM 1 Hinge 4000002639

GTM 1 Hinge 4000002642

## Repair Plates / Reinforcement Edge Hinge

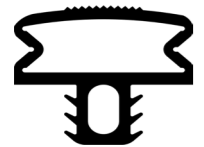
Rep. plate / Conversion kit edge hinge 2-pieces leaf KTM/BTM  
4000002691

Rep. plate / Conversion kit edge hinge 2-pieces leaf GTM  
4000002693

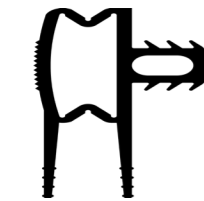
Rep. plate / Conversion kit edge hinge 2-pieces frame KTM/BTM/ GTM  
40000002692







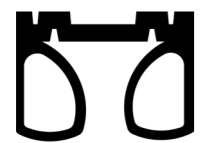
TPE Side seal BTM / KTM / GTM 4000001679



TPE Floorseal BTM / KTM / GTM 4000002410



Sliding door side seal 4000001656



Sliding door floor seal GSL / GS 4000001653



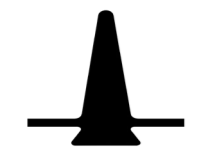
Sliding door floor seal KSL 4000001666



Hinged door side seal old execution 4000001676



Hinged door floor seal old execution 4000001669



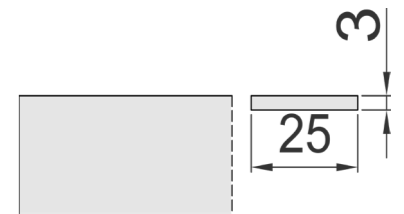
Sliding door side seal old execution 4000001655

### Mounting profiles for floorseal

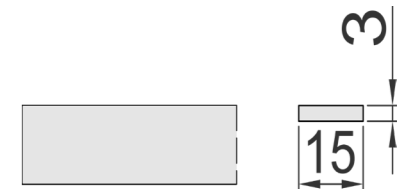
Mounting profile KSL floorseal 4000001509



Mounting profile floorseal (1653)  
Alu-Flatprofil 25x3mm for GSL / GS  
4000002577



Mounting profile floorseal (1669)  
Alu-flatprofil 15x3mm for HD old execution  
4000002614



Sicomet Superglue (without primer usable) 400001468

Primer 4000001473 (for Jowat glue)  
Jowat glue 4000001469 (without pic.)

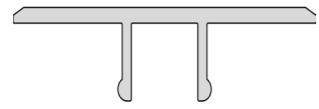


Miter shears 4000001043

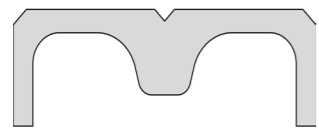


**Attention all seals are sold per linear meter and can not be pre-assembled. Optional adhesive+primer can be purchased.**

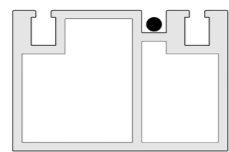
Heating cover sliding door 4000001508



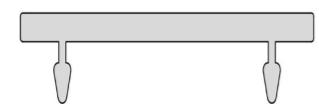
Heating cover hinged door 4000001505



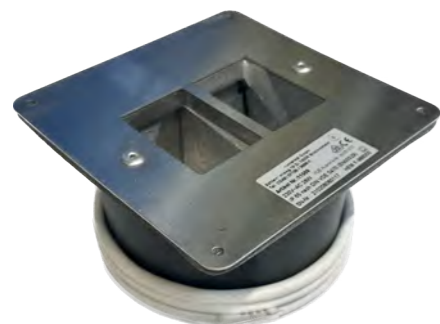
Threshold profile 4000001507



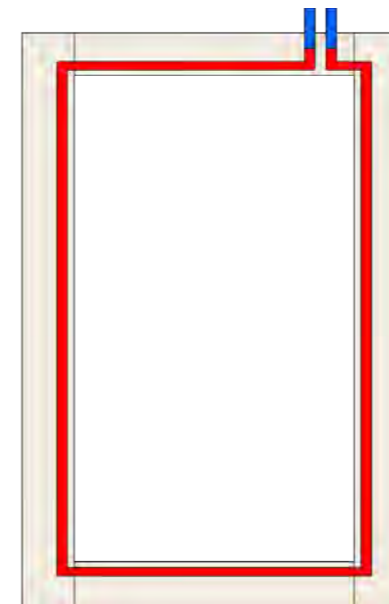
Threshold cover 4000001506



Heated pressure valve 4000000228

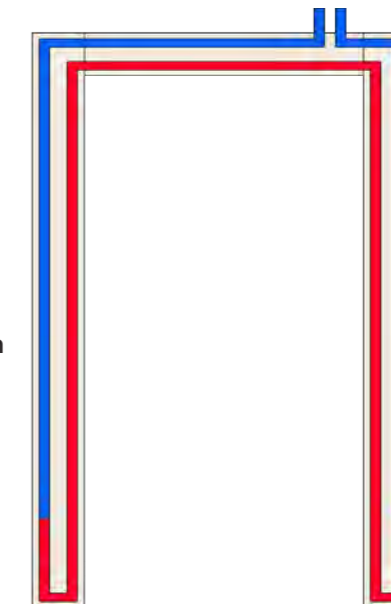


Hinged door with threshold or 4-side frame



**Formula:**  
 2 x clear width  
 +  
 2 x clear height  
 +  
 100mm  
 plus 2 Pieces  
 coldending a 500mm

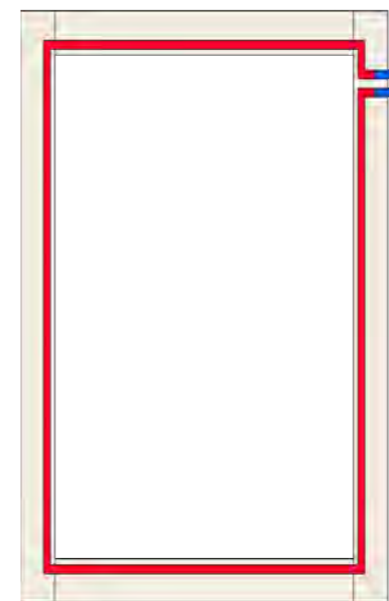
Hinged door without threshold



**Formula:**  
 1 x clear width  
 2 x clear height  
 +  
 600mm  
 +  
 1 cold end 1 x clear height  
 + 300mm  
 +  
 1 cold end 1 x clear height  
 and 1 x clear width +300mm

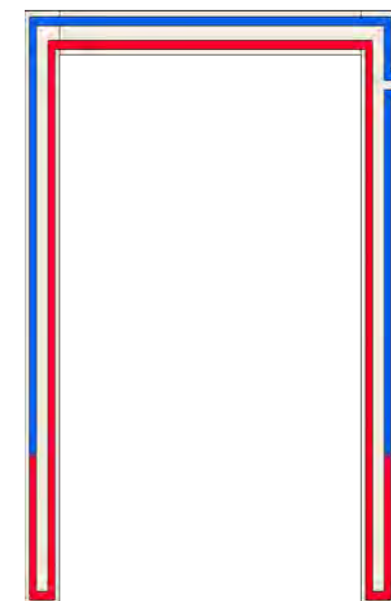
Heating cable 300mm folded

Sliding door with threshold or all-around



**Formula:**  
 2 x clear width  
 +  
 2 x clear height  
 +  
 300mm  
 +  
 2 Stck. cold ends a  
 500mm

Sliding door without threshold



**Formula:**  
 1 x clear width  
 +  
 2 x clear height  
 +  
 1000mm  
 +  
 1 cold end 1 x clear height  
 +  
 1 cold end 1 x clear height  
 and 1 x clear width

Heating cable 500mm folded

Red= Heater

Blue = Connection line

**Important! We customize your heaters according to measurements!**  
 When making inquiries, please make sure that you provide us with the clear dimension of the door specify.

**KSL -80 2013 Outer lever**

DIN Left outer lever complete 4000001911

DIN Right outer lever complete 4000001912

**GSL -120 2013 Outer lever**

DIN Left outer lever complete 4000001911

DIN Right outer lever complete 4000001912

**KSL -80 2013 Inner lever**

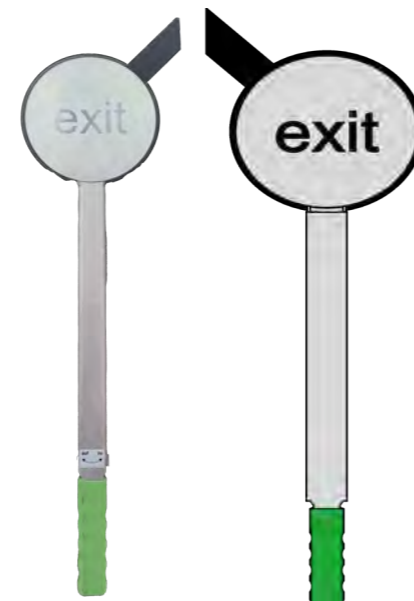
DIN Left inner lever 4000001913

DIN Right inner lever 4000001916

**GSL -120 2013 Inner lever**

DIN Left inner lever 4000001914

DIN Right inner lever 4000001918

**Internal bushing KSL / GSL**

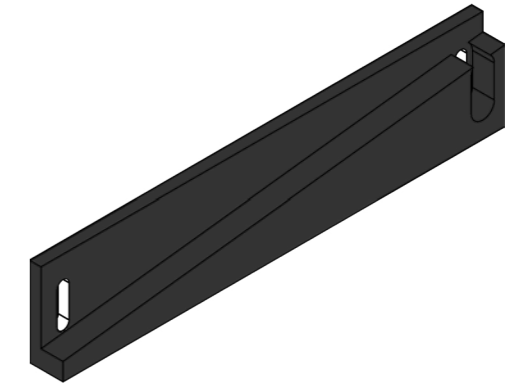
KSL 4000001743

GSL 4000001750

**Lever 2013 impression piece**

Impression piece DIN Left 4000001723

Impression piece DIN Right 4000001724

**Bolt lock sliding door**

Bolt lock door thickness 80mm 4000001713

Bolt lock door thickness 120mm 4000001714

Bolt lock TS 80mm Automatic 4000001715

Bolt lock TS 120mm Automatic 4000001716



Special levers on request.

**Cover for trolley**

DIN Left 4000001116

DIN Right 4000001115

**Trolley fitting**

DIN Left 4000001979

DIN Right 4000001978

**Angle joint**

4000001990

**Drawbar**

4000001142

**ems Outer impression lever 2000**

GS 140 with PZ DIN Left 4000002353

GS 140 with PZ DIN Right 4000002354

**ems Outer impression lever 2000**

GS 140 DIN Left / Right 4000001977

KS 100 DIN Left / Right 4000001966



**Important: To determine the length of the drawbar,  
we need the clear height of the door.**

**Roller with bearing**

4000001101

**Adjusting ring for centering the roller**

4000001095

**Roll holder**

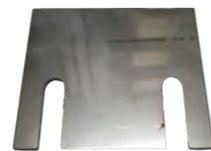
DIN Left 4000001096

DIN Right 4000001097



**Compensation plate sliding door**

4000001087



**Stopper sliding door current**

DIN Left 4000002370

DIN Right 4000002371



**Stopper old version**

4000002863



**Timing belt**

4000001601

**Clamp for timing belt**

Clamp with bore 4000001306

Clamp with thread 4000001307



**Timing belt tensioning device**

DIN Left 4000002375

DIN Right 4000002376



**Timing belt driver**

4000001921

**Timing belt driving screw**

4000001111



**End caps running rail**

4000001100



**Footplate repair kit 1 rollers**

DIN Left Right 4000002313

DIN Right Left 4000002314

**Footplate repair kit 2 rollers**

DIN Left Right 4000002312

DIN Right Left 4000002315

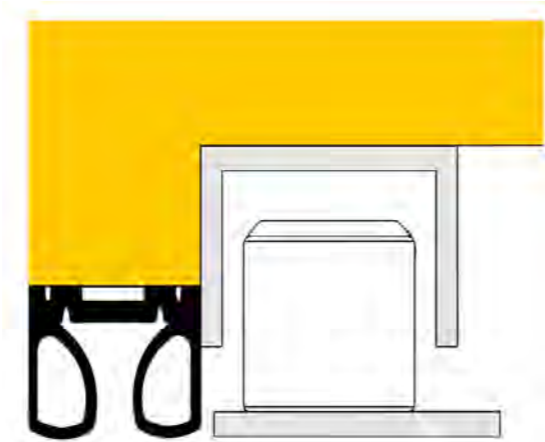
**Guide rail sliding door**

DIN Left 4000002869

DIN Right 4000002870

**Roller Single with eccentric and screw**

4000002666

**Swing door hinge**

4000002097

**Magnet for reed switch**

4000001488

**Holder for magnetic switch**

4000001522

**Magnetic switch**

4000001908

**Swing door compensation plate**

4000001524

**Finger pinch protection**

4000001550



**Standard pull switch**

4000000572



**Heavy duty pull switch**

4000000558



**Pull cord red for pull switch**

4000001285



**Pushbutton combination 3-fold**

4000000544



**Single point pushbutton Open / Close**

4000000567



**FEIG control**

4000000578



**Worm geared drive motor standard**

4000000579



**Motor mount for worm geared drive motor**

4000002374



**Plug for control 3 pole**

4000001616



**Socket for control 3 pole**

4000000420



Special automatic accessories and wiring on request.